



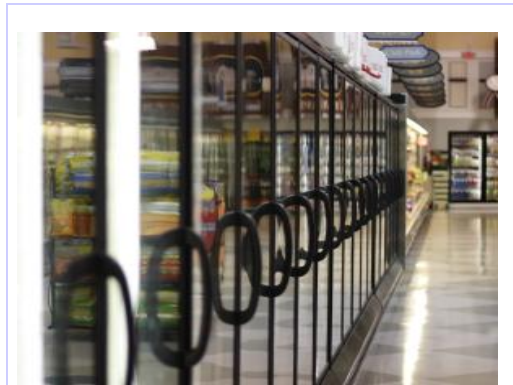
Part Number: AD-2004-MDS



## Magnetic Door Switch

### Features

- § 32-Bit unique ID with 24-bit Digital Counter, digital input status
- § Switch for installation and service mode indication
- § Up to 600-foot range
- § Transmits immediately on status change
- § Up to 100 transmitters can coexist
- § Battery lasts from 5 to 10 years
- § Very small (1.3" X 2.1" X .6") ABS Enclosure
- § Complies with part 15 of the FCC rules
- § Water resistant coating on PCB
- § CRC-16 checked Status, ID and counter data
- § Internal Loop antenna



**No wiring required!**

Magnetic Switch wireless transmitter is a battery operated digital counter sensor with a microprocessor controlled 418 MHz. FCC certified radio transmitter. The Magnetic Switch has an on board time of day clock that allows it to spend most of the time in a low power quiescent state. At predetermined time intervals the clock will wake up the onboard microprocessor. Unique serial number information is read 1-wire digital device, counter data is read from a 24-bit internal counter register. This information is combined with a CRC-16 error check and transmitted in a very short data packet that results in a transmitter on time of only 15 milliseconds. This architecture allows the Magnetic Switch to consume very little energy and a battery life of 5 to 10 year results.

### AVIDdashboard Integration

Sensor readings are quickly viewed from the AVIDdashboard main page by adding a graphical widget to display the status of the door. User defined Alerts can signal support resources to handle any out of control conditions. Reports can provide the number of door opens and closes.

Supply Cabinet 4-532  
has been opened.



Contact  
**AVIDwireless**  
**817-510-5301**

[sales1@avidwireless.com](mailto:sales1@avidwireless.com)

[www.avidwireless.com](http://www.avidwireless.com)



# AVIDSmartSensors™

## Wireless Magnetic Door Switch

---

### Specifications

Parameter	Units
Transmission Rate	10-17 Seconds Random
Shelf Life with Battery Installed	5 Years in quiescent mode (10 years with optional battery)
Dimensions (enclosure)	1.5 W X 2.1 H X .6 D (inches)
Weight	1.5 oz.
Operating Temperature	-40° to 85° C
Input	Switch closure 3.3 volts pulsed
Humidity	0% to 90% Non-Condensing
Battery Life with Transmission	5-10 Years with TX Period of 10-17 Seconds
Battery	3.6 volt Lithium



AVIDwireless  
2129 Martin Dr. Ste 200  
Bedford, TX 76021  
817-510-5301

Email:  
[sales1@avidwireless.com](mailto:sales1@avidwireless.com)  
Website:  
[www.avidwireless.com](http://www.avidwireless.com)